

Handrail Falling from Overhead Misses Worker

Purpose

To share “lessons learned” gained from incident investigations through a small group discussion method format.

To understand “lessons learned” through a Systems of Safety viewpoint.



This material was produced by the Labor Institute and the United Steelworkers International Union under grant number 46DO-HT11 Susan Harwood Training Grant Program, for the Occupational Safety and Health Administration, U.S. Department of Labor. It does not necessarily reflect the views or policies of the U.S. Department of Labor, nor does mention of trade names, commercial product or organizations imply endorsement by the U. S. Government.

Lessons Learned

Volume 06 Issue 16

© 2006 The Labor Institute

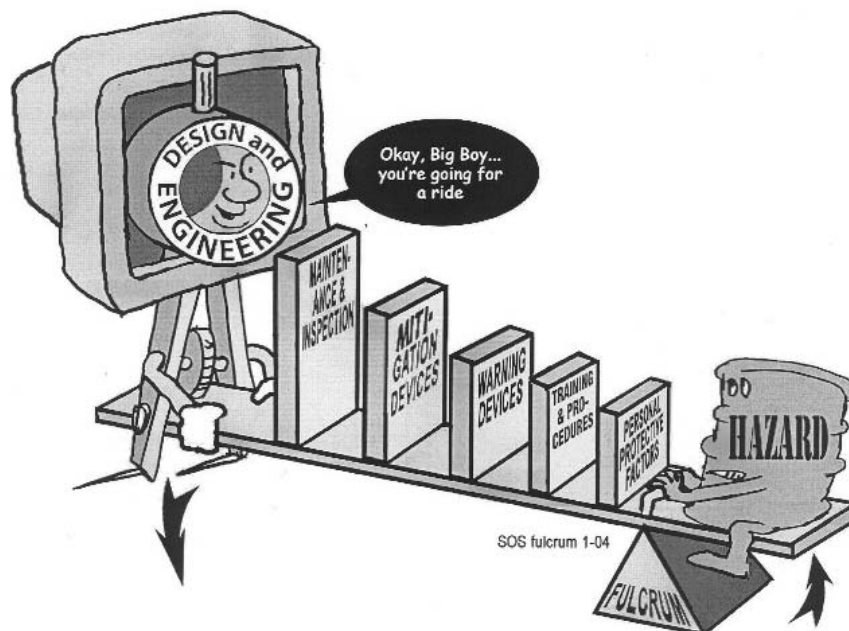
Background Information

Before beginning this Lessons Learned, please review this and the next page which contain information that will introduce the concepts of Lessons Learned and Systems of Safety.

Creating a safe and healthy workplace requires a never ending search for hazards that sometimes are not obvious to us. These hazards exist in every workplace and can be found by using various methods. Lessons Learned are just as the name suggests: learning from incidents to prevent the same or similar incidents from happening again.

Systems Are Not Created Equal: Not equal in protection and not equal in prevention.

Using our Systems Focus to uncover system flaws or root causes is only one part of controlling hazards. We also need to look at the systems involved to decide on the best way to deal with the problem. The most effective way to control a hazard is close to its source. The least effective is usually at the level of the person being exposed. The system of safety in which the flaw is identified is not necessarily the system in which you would attempt to correct the flaw.





Title: Handrail Falling from Overhead Misses Worker

Identifier: Volume 06 Issue 16

Date Issued: October 24, 2006

Lessons Learned Statement

When you have a railing in an area that requires frequent access, the design of the railing needs to allow for easier and safer access. A sliding handrail was recommended after the incident, but a more proactive **Design and Engineering Systems of Safety** approach should be taken for other areas with the same problem.

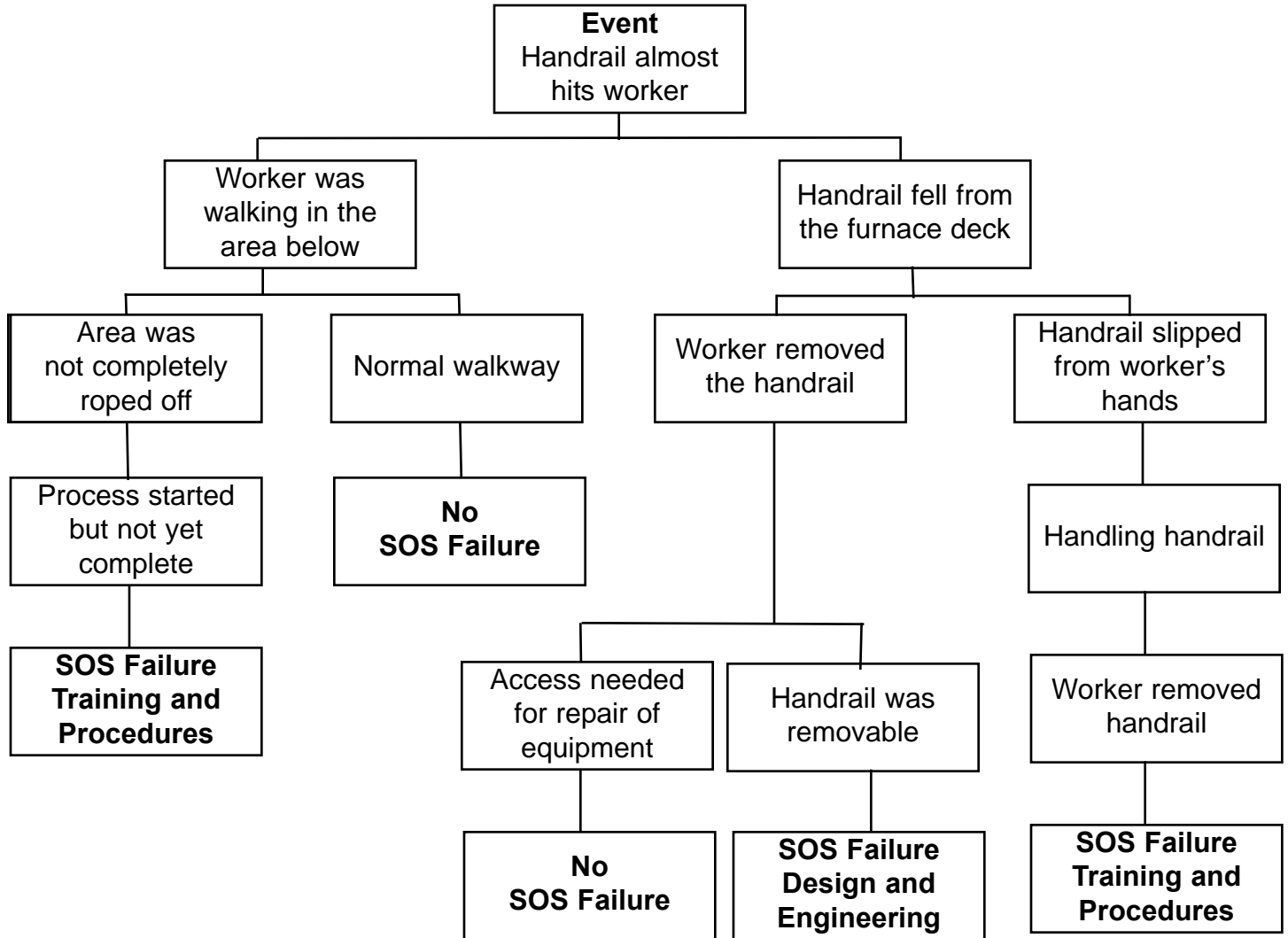
A procedure needs to be developed to ensure that no overhead work is started until the work area below is roped off. This will prevent workers below from getting hit by falling objects from work being done overhead.

Discussion

A maintenance worker needed to remove a handrail from the L-1 furnace deck to gain needed access for repair of equipment. When he removed the handrail, it slipped from his hands and fell to the floor below just missing a fellow worker who was in the area. The area below was in the process of being roped off due to overhead work, but this task had not been completed yet.

Analysis

The **Logic Tree** is a pictorial representation of a logical process that maps an incident from its occurrence, “the event,” to facts of the incident and the incident’s root causes.



Recommended Actions

1. Design the handrail so that it slides open and closed.
2. Implement written procedures to block off the areas below before beginning overhead work
3. Communicate all potential hazards before performing the task

Education Exercise

Working in your groups and using the Lessons Learned Statement, Discussion, Analysis and Recommended Actions, answer the two questions below. Your facilitator will give each group an opportunity to share answers with the large group.

1. Give examples of ways to apply the Lessons Learned Statement at your workplace.

2. Complete the chart below by:

- Putting an “X” beside the recommended actions you think your employer would implement at your workplace.
- Putting an “X” beside the recommended actions you think should be implemented at your workplace.
- Prepare to share with the group the reasons for your answers.

Employer	Recommended Actions	You
	1. Design the handrail so that it slides open and closed.	
	2. Implement written procedures to block off the areas below before beginning overhead work.	
	3. Communicate all potential hazards before performing the task.	

EVALUATION

Lessons Learned: Handrail Falling from Overhead Misses Worker

Please answer the two questions below:

1. How important is this lessons learned to you and your workplace? (Circle one.) Rate on a scale of 1 to 5, with 5 being the most important.

1	2	3	4	5
---	---	---	---	---

2. What suggestions would you make to improve this Lessons Learned?

End of Training Trainer's Instructions

Please complete the information below.

Trainer's Name _____
(Please Print)

Date of training: _____

No. of Participants: Total _____ Hourly _____ Management _____

Location of Training: _____

USW Local # _____

Send this page **plus the Education Exercise and Evaluation for each participant** to:

**Doug Stephens
United Steelworkers International Union
3340 Perimeter Hill Drive
Nashville TN 37211**

Thank you for facilitating the sharing of this
Lesson Learned with your coworkers.

Sign-In Sheet

Name of Class _____ Date of Class _____

Instructors: _____

Please Check One*		Print Name	Signature
H	M		

*H = Hourly Worker
M = Management or Salaried Worker